

# MESBL GC-MS metabolite peak library

Metabolic Engineering & Systems Biology Laboratory  
FORTH/ICE-HT

<http://miolite2.iceht.forth.gr>

1

A standardized profile repository based on a validated metabolite peak library

2

Specialized data normalization and filtering methods

**MS metabolomic data analysis needs**

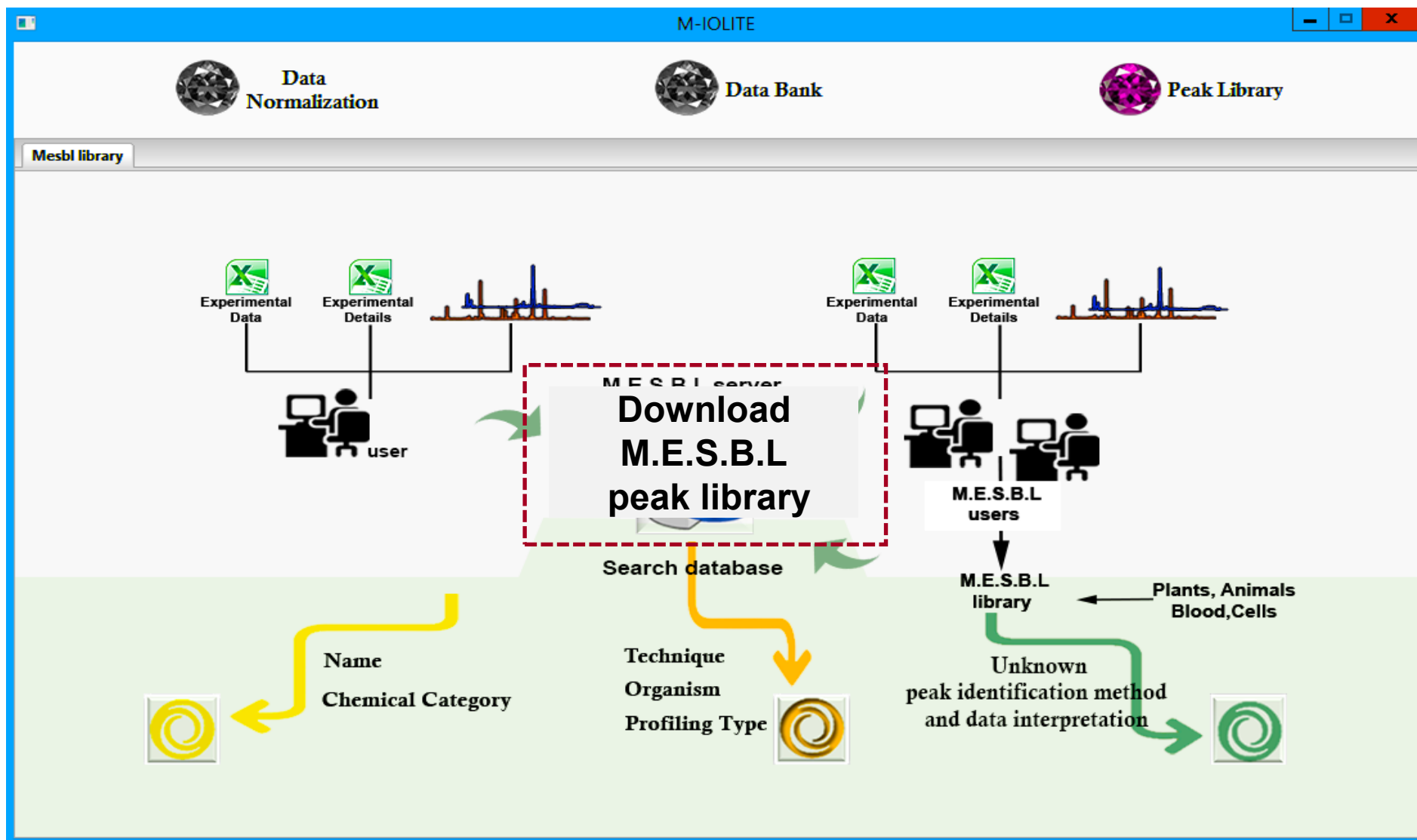
Unknown peak identification methods

3

Software enabling accurate metabolic network reconstruction and analysis from the metabolomic data and their integration with other omic profiles and networks

4

# M.E.S.B.L. peak library



# Extended standardized peak library

6 researchers

multiple experiments

many tissues/organisms

## Extended peak library

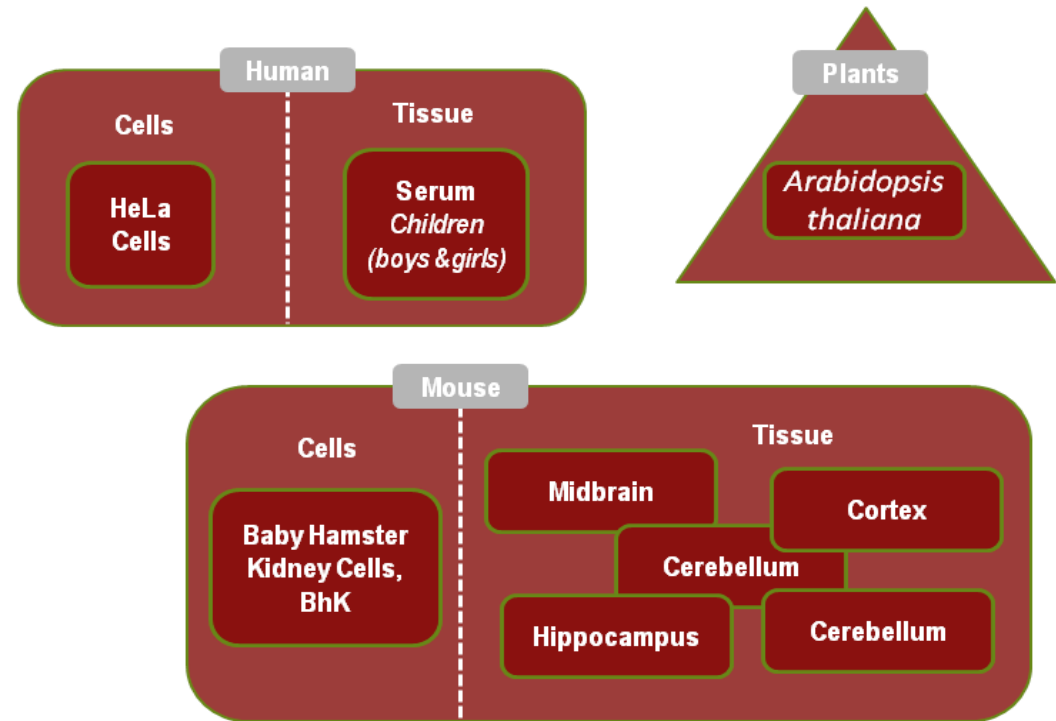
904 peaks: 429 reviewed  
(212 of known identity)

### known peaks:

standards, databases, references

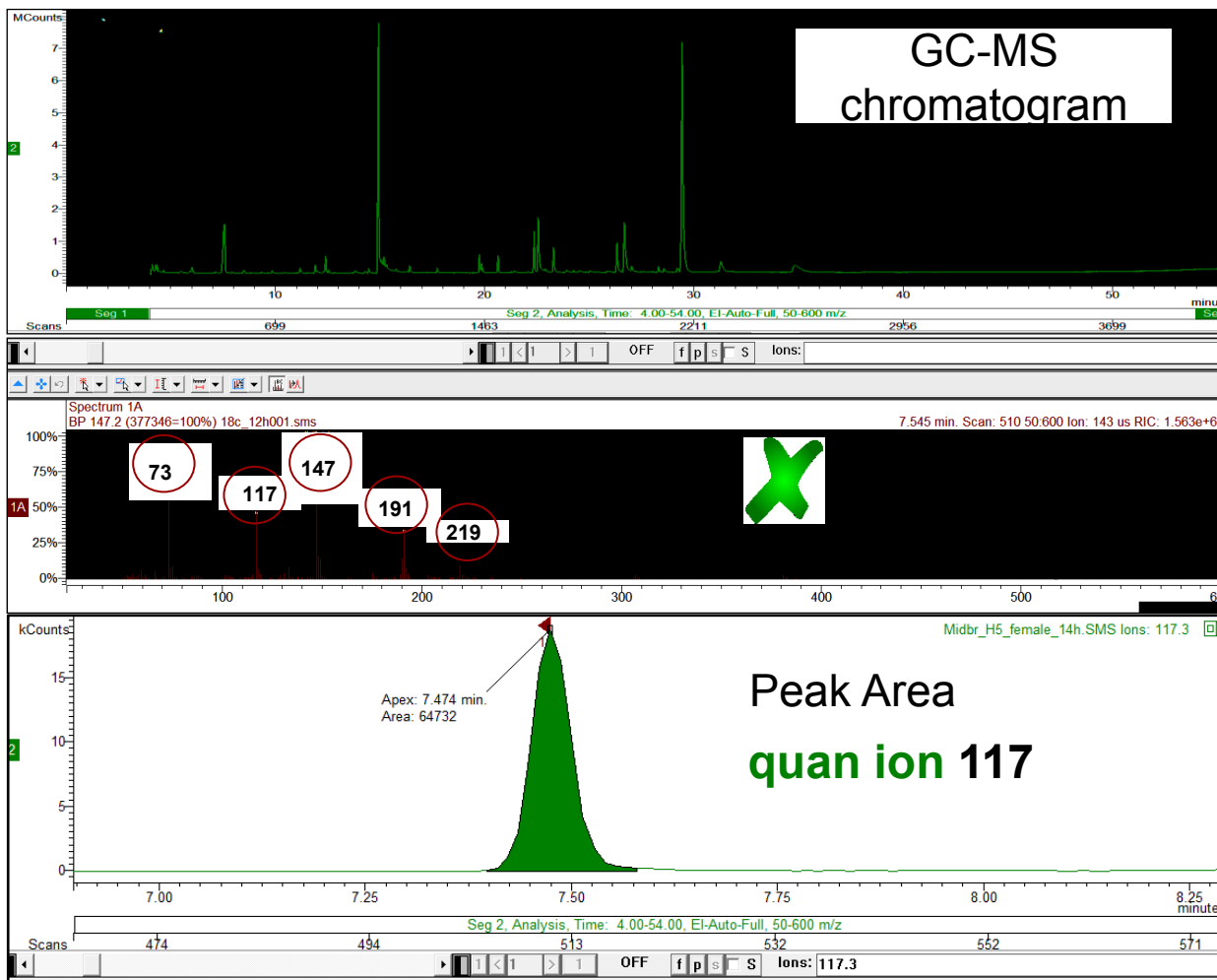
### unknown peaks:

at least two researchers



# Extended standardized peak library

Metabolite  
centric  
approach



Feature  
centric  
approach

# Extended standardized peak library



Updated and filtered GOLM by M.E.S.B.L

1713 unique peaks

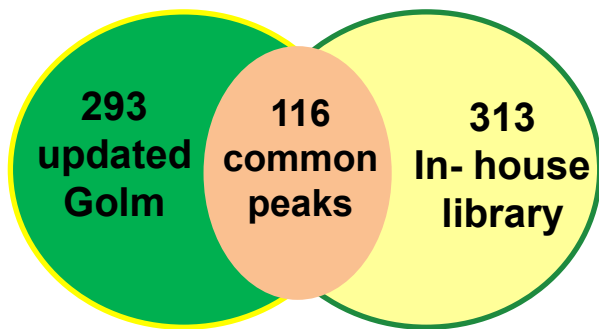
409 of known identity 1304 of unknown identity

Updated M.E.S.B.L library

904 peaks

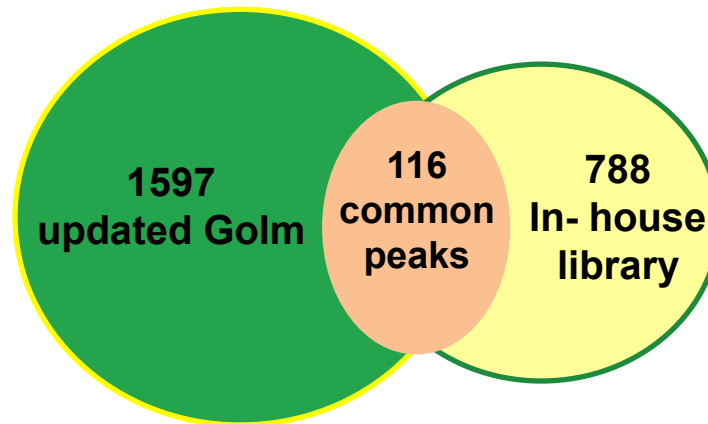
429 reviewed  
(212 of known identity)

Extended M.E.S.B.L 722 peaks



Known and reviewed

Extended M.E.S.B.L 2501 peaks



All included